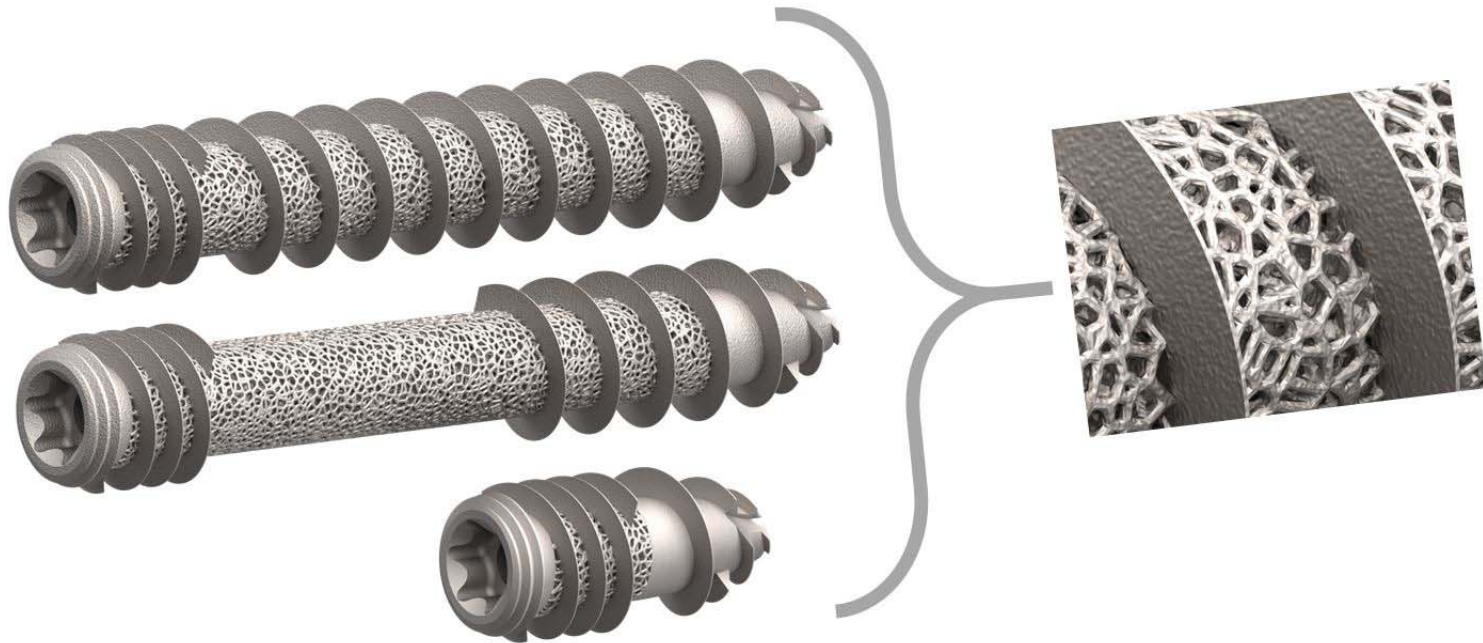




T-FIX™ 3Dsi

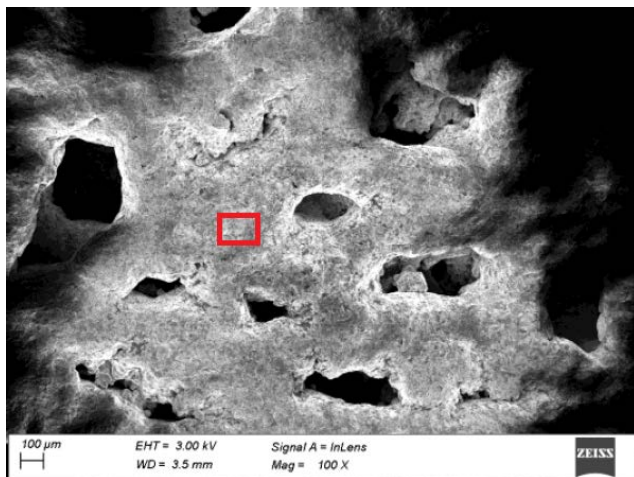
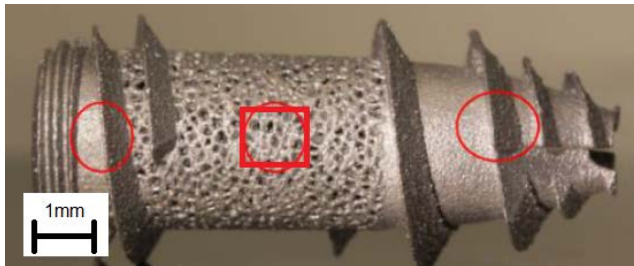
JOINT FUSION SYSTEM



- Passively Smart Proprietary Technology -

Macro:

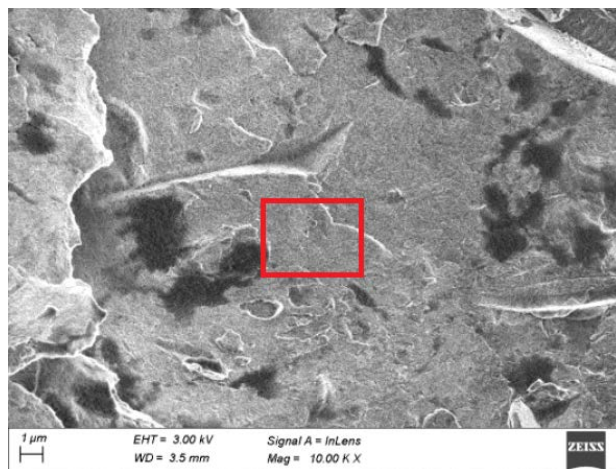
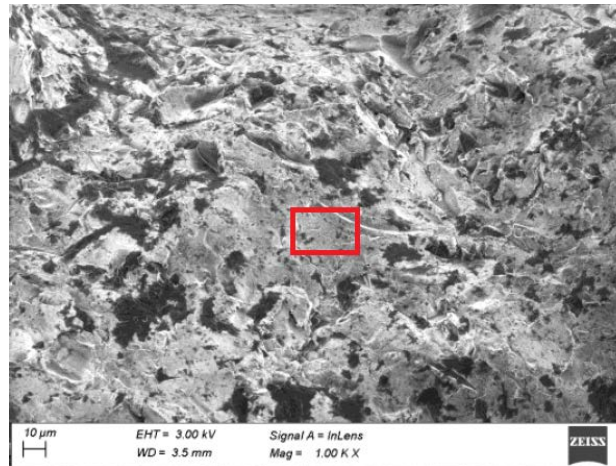
RANDOMIZED PORES (0.1-0.5mm) - SIZED TO ALLOW BONE GROWTH AND VASCULARIZATION



| | Ø11.5 | Ø13.0 |
|----|----------------------|-------|
| 25 | ✓* | ✓* |
| 30 | ✓ | ✓ |
| 35 | ✓ | ✓ |
| 40 | ✓ | ✓ |
| 45 | ✓ | ✓ |
| 50 | ✓ | ✓ |
| 55 | ✓ | ✓ |
| 60 | ✓ | ✓ |
| 65 | ✓ | ✓ |
| 70 | ✓ | ✓ |
| ✓* | *FULLY THREADED ONLY | |

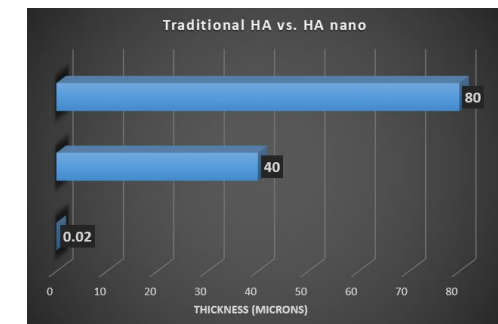
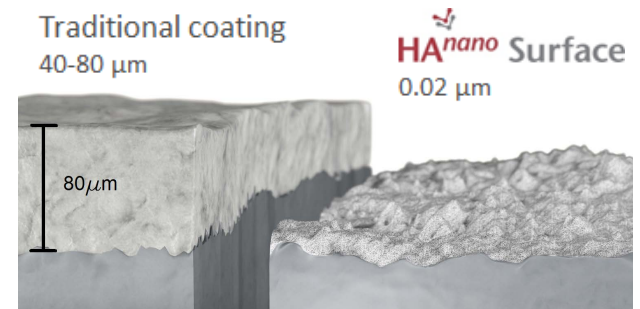
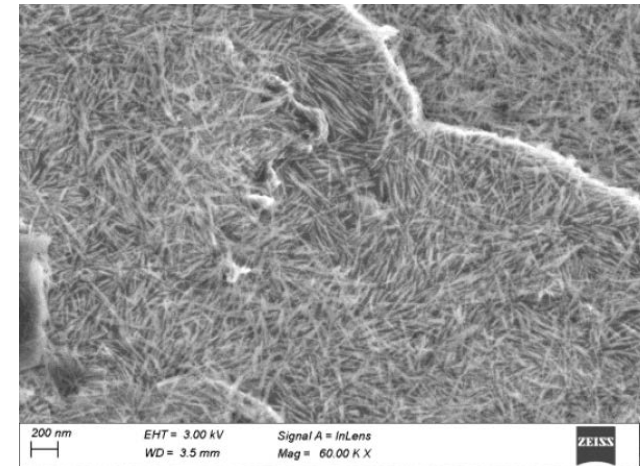
Micro:

SURFACE ROUGHNESS (1-10μm) - OPTIMIZED TO INTERLOCK MINERALIZED BONE AND IMPLANT SURFACE



Nano:

THIN HYDROXYAPATITE LAYER (~20nm) - YIELDS INCREASED SURFACE ENERGY AND PROVIDES MATERIALS TO BUILD BONE



510(k) CLEARED APPROACHES:

1. LATERAL
2. S2 AI (ALAR ILIAC)
3. OPEN POSTERIOR BRIDGING
4. TRANSGLUTEAL LATERAL